



MARQUIS TOPS

SPECIFICATIONS - MARQUIS SINK TOPS

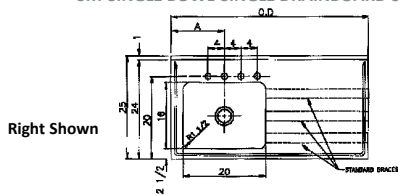
Seamless welded construction of 18 gauge type 304 stainless steel • Bowl with anti-splash rim seamless welded to top • Drainboard double-pitched to bowl without the use of creases • Straight-sided compartment provides greater capacity • Standard understructural braces of 16 gauge mild steel • Underside coated to insulate for sound and reduce condensation • Standard wood frame • Unit polished with a Hand-Blended Just Finish • Drain punch #35 centered for Just J-35 cup strainers

DM-72-34

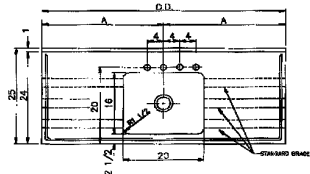
Shown with: JTR-51 Faucet, JB-1500 Soap Dispenser, JB-99 Drain



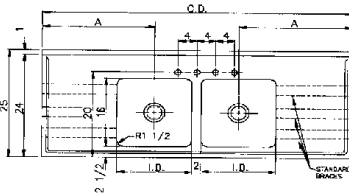
SM-SINGLE BOWL-SINGLE DRAINBOARD SERIES



SM-SINGLE BOWL-DOUBLE DRAINBOARD SERIES



DM-DOUBLE BOWL-DOUBLE DRAINBOARD SERIES



SINGLE BOWL - SINGLE DRAINBOARD				
Model No.	O.D. ¹	BOWL-I.D. ²	A	Depth
SM-42-20-L ³ or R ³	42	16 x 20	13	7-1/2
SM-48-20-L ³ or R ³	48	16 x 20	13	7-1/2

SINGLE BOWL - DOUBLE DRAINBOARD				
Model No.	O.D. ¹	BOWL-I.D. ²	A	Depth
SM-54-20	54	16 x 20	27	7-1/2
SM-60-20	60	16 x 20	30	7-1/2
SM-66-20	66	16 x 20	33	7-1/2
SM-72-20	72	16 x 20	36	7-1/2
SM-84-20	78	16 x 20	42	7-1/2
SM-96-20	96	16 x 20	48	7-1/2

DOUBLE BOWL - DOUBLE DRAINBOARD				
Model No.	O.D. ¹	BOWL-I.D. ²	A	Depth
DM-48-34	48	16 x 16	15	7-1/2
DM-60-29	60	16 x 13-1/2	22	7-1/2
DM-66-29	66	16 x 13-1/2	25	7-1/2
DM-66-34	66	16 x 16	24	7-1/2
DM-72-29	72	16 x 13-1/2	28	7-1/2
DM-72-34	72	16 x 16	27	7-1/2
DM-84-34	84	16 x 16	33	7-1/2
DM-96-34	96	16 x 16	39	7-1/2

¹ O.D. - Overall Dimensions (Left-to-Right)

² I.D. - Inside Dimensions (Front-to-Back X Left-to-Right)

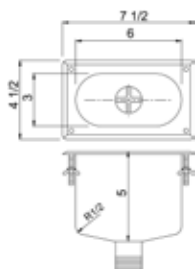
³ Suffix "L" or "R" indicates drainboard on left or right end

All dimensions shown in inches.

CUP SINKS

JUST cup sinks are ideal for the ready disposal of liquids and distillation in the laboratory • Sink and drain fabricated of type 316 stainless steel • Drain consists of 1-1/2" I.P.S. stainless steel pipe welded to sink with integral crossbar strainer • The top sink flange and interior surfaces polished with a Hand-Blended Just Finish • Round cup sinks are 16 gauge • Oval cup sinks are 18 gauge

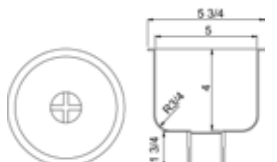
A-41962



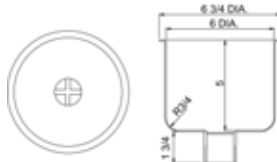
A-41963



A-28066

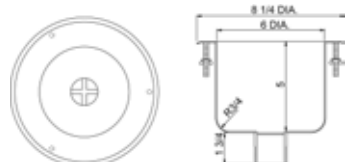


A-28065 CUP SINK

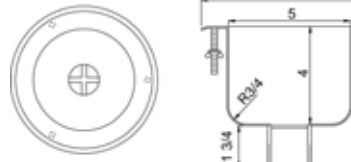


A-28066

A-37734



A-39056 CUP SINK



A-37734