



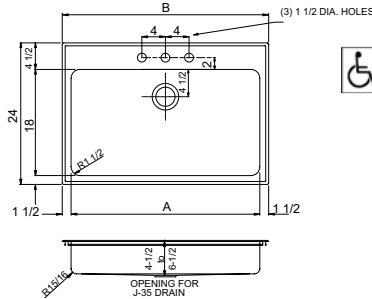
INSTITUTIONAL GRADE LARGE CAPACITY ADA COMPLIANT DROP-IN SINKS

**NEW
PRODUCT GROUP!**

ARB-ADA SERIES STAINLESS STEEL SINK

Constructed of 18 gauge, type 304 stainless steel • Faucet flange at rear of compartment
 • Interior and top surfaces polished to a non-porous Hand-Blended Just Finish • Smooth fully coated underside insulates for sound and reduces condensation • Straight-sided compartment with 1-1/2" radius corners provides greater capacity • Self-rimming top mount Grip-Rim Plus with stainless steel mounting channels • Drain punch #35 center rear for Just J-35 unless otherwise specified.

Includes: J-1174-KS faucet, and J-35-SSF drain system.



ARB-ADA SERIES - ADA COMPLIANT DROP-IN SINKS
LEDGE REAR

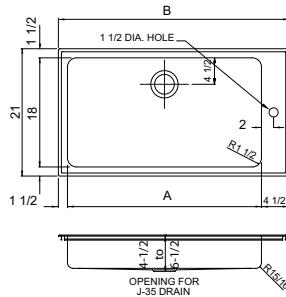
Model No.	A ¹	B ²	Depth
ARB-ADA-2435-A-GR-T	32	35	4-1/2 to 6-1/2
ARB-ADA-2437-A-GR-T	34	37	4-1/2 to 6-1/2
ARB-ADA-2443-A-GR-T	40	43	4-1/2 to 6-1/2
ARB-ADA-2445-A-GR-T	42	45	4-1/2 to 6-1/2
ARB-ADA-2451-A-GR-T	48	51	4-1/2 to 6-1/2
ARB-ADA-2457-A-GR-T	54	57	4-1/2 to 6-1/2
ARB-ADA-2463-A-GR-T	60	63	4-1/2 to 6-1/2

A¹ - Inside Width
B² - Overall Width

ARR-ADA SERIES STAINLESS STEEL SINK

Constructed of 18 gauge, type 304 stainless steel • Faucet flange to right of compartment • Interior and top surfaces polished to a non-porous Hand-Blended Just Finish • Smooth fully coated underside insulates for sound and reduces condensation
 • Straight-sided compartment with 1-1/2" radius corners provides greater capacity • Self-rimming top mount Grip-Rim Plus with stainless steel mounting channels • Drain punch #35 center rear for Just J-35 unless otherwise specified.

Includes: JPR-501 pre-rinse faucet, and J-35-SSF drain system.



ARR-SERIES - ADA COMPLIANT DROP-IN SINKS
LEDGE RIGHT

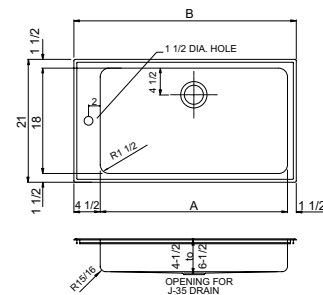
Model No.	A ¹	B ²	Depth
ARR-ADA-2138-A-GR-T	32	38	4-1/2 to 6-1/2
ARR-ADA-2140-A-GR-T	34	40	4-1/2 to 6-1/2
ARR-ADA-2146-A-GR-T	40	46	4-1/2 to 6-1/2
ARR-ADA-2148-A-GR-T	42	48	4-1/2 to 6-1/2
ARR-ADA-2154-A-GR-T	48	54	4-1/2 to 6-1/2
ARR-ADA-2160-A-GR-T	54	60	4-1/2 to 6-1/2
ARR-ADA-2166-A-GR-T	60	66	4-1/2 to 6-1/2

A¹ - Inside Width
B² - Overall Width

ARL-ADA SERIES STAINLESS STEEL SINK

Constructed of 18 gauge, type 304 stainless steel • Faucet flange to left of compartment • Interior and top surfaces polished to a non-porous Hand-Blended Just Finish • Smooth fully coated underside insulates for sound and reduces condensation
 • Straight-sided compartment with 1-1/2" radius corners provides greater capacity • Self-rimming top mount Grip-Rim Plus with stainless steel mounting channels • Drain punch #35 center rear for Just J-35 unless otherwise specified.

Includes: JPR-501 pre-rinse faucet, and J-35-SSF drain system.



ARL-SERIES - ADA COMPLIANT DROP-IN SINKS
LEDGE LEFT

Model No.	A ¹	B ²	Depth
ARL-ADA-2138-A-GR-T	32	38	4-1/2 to 6-1/2
ARL-ADA-2140-A-GR-T	34	40	4-1/2 to 6-1/2
ARL-ADA-2146-A-GR-T	40	46	4-1/2 to 6-1/2
ARL-ADA-2148-A-GR-T	42	48	4-1/2 to 6-1/2
ARL-ADA-2154-A-GR-T	48	54	4-1/2 to 6-1/2
ARL-ADA-2160-A-GR-T	54	60	4-1/2 to 6-1/2
ARL-ADA-2166-A-GR-T	60	66	4-1/2 to 6-1/2

A¹ - Inside Width
B² - Overall Width